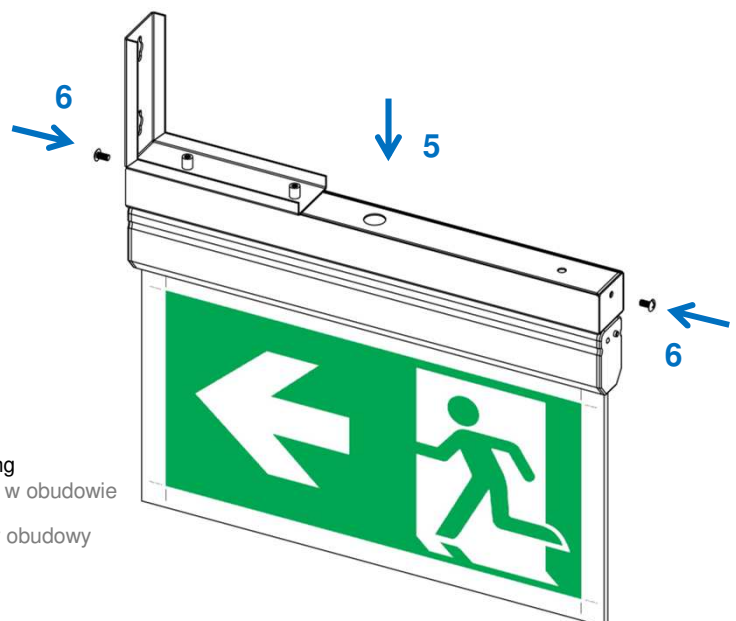
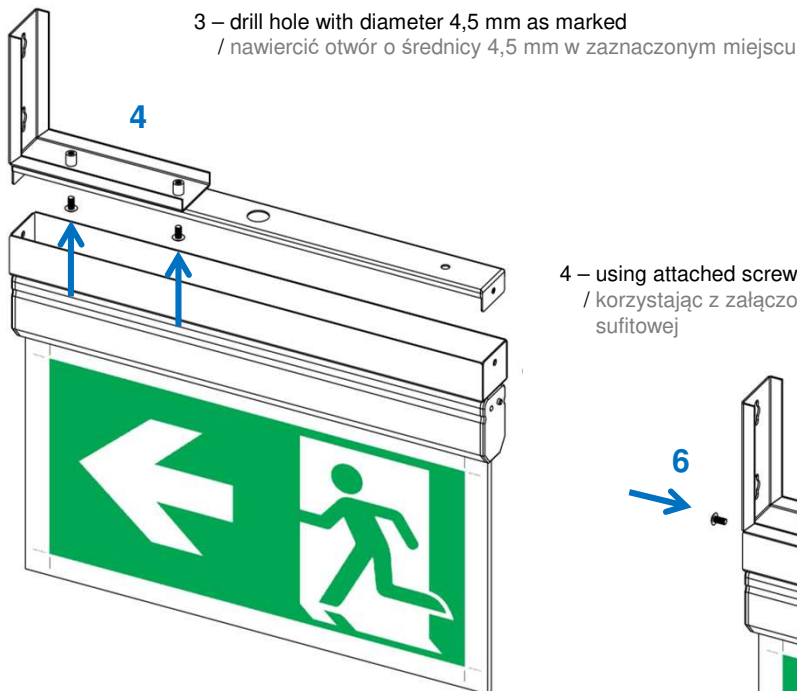
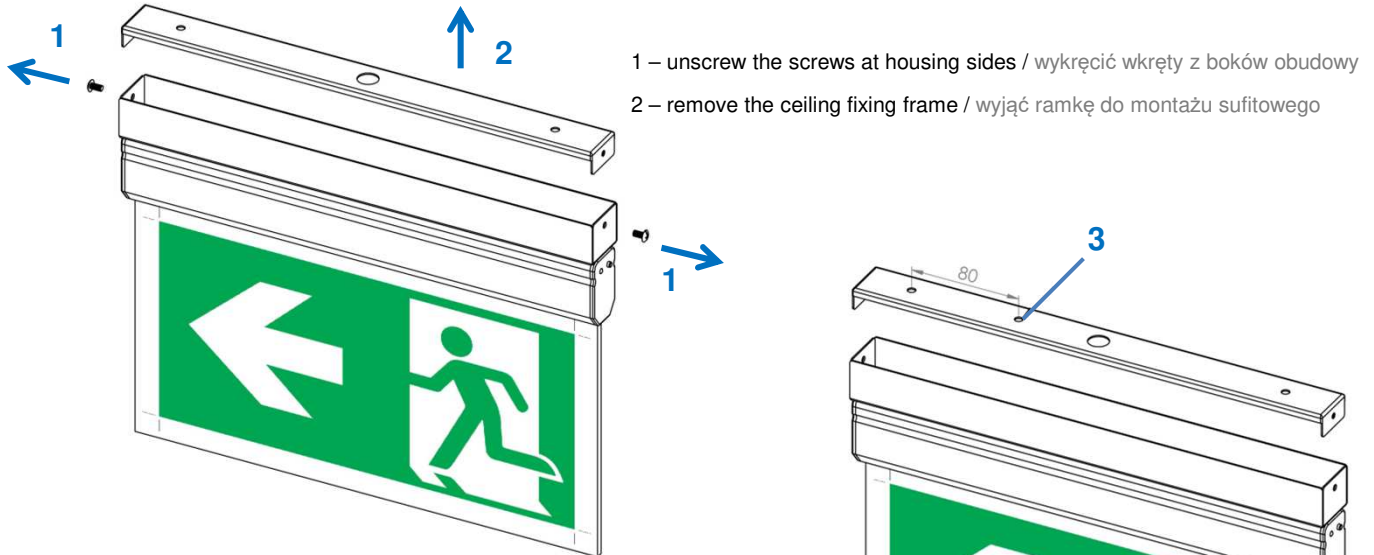


OXIMIA

Installation of a flag mounting bracket Mocowanie uchwyty do montażu flagowego

Important: the flag bracket should be mounted from the side opposite to test button and signal LED

Ważne: uchwyt flagowy powinien być zamocowany ze strony przeciwnej do przycisku testu i diody sygnałowej



KTM 96398 – Instruction flag bracket for Oximia, PL/EN, v.20221125